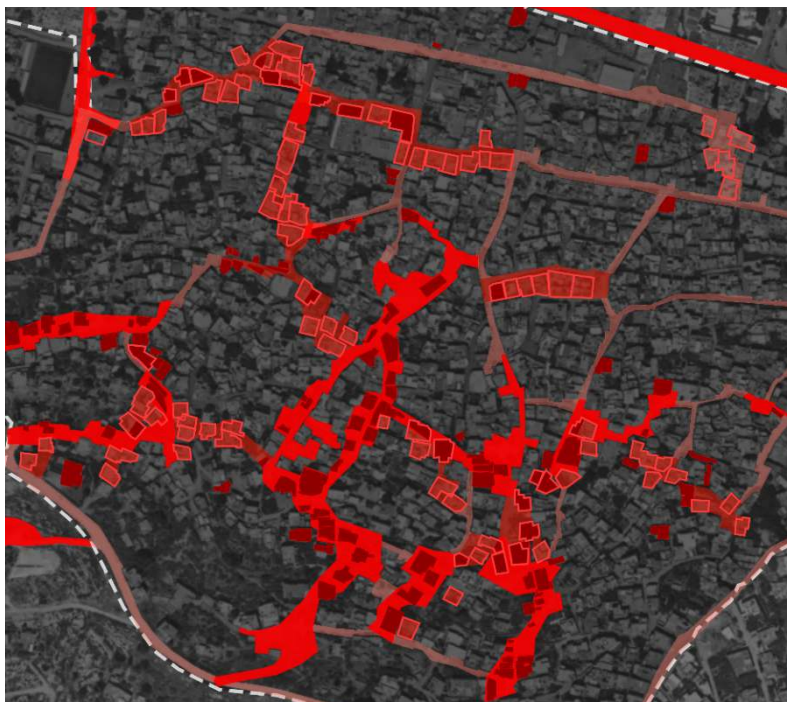


Forensic Architecture is a multidisciplinary research group based at Goldsmiths, University of London, that uses architectural techniques and technologies to investigate cases of state violence and violations of human rights around the world.

Goldsmiths, University of London  
8 Lewisham Way  
London SE14 6NW  
United Kingdom

[forensic-architecture.org](https://forensic-architecture.org)

## The Genocide's Spillover: The Israeli Military Campaign in the West Bank between January and April 2025



Report by Forensic Architecture

25 April 2025

## A CONTEXT

- 1 On 21 January 2025—two days after a ceasefire agreement in Gaza went into effect—Israel announced the start of a military offensive in the northern part of the occupied West Bank, codenamed ‘Iron Wall’. While Israeli operations in the West Bank have escalated since October 2023—evolving from an era characterised by shorter term, more surgical raids to one also characterised by airstrikes, intensified targeted assassinations, and mass incarceration—‘Iron Wall’ marks a further shift yet. The ‘Iron Wall’ operation, ongoing at the time of publication, is distinct in its focus on establishing infrastructure for a long-term military presence, and/or frequent repeat raids, within multiple densely populated urban zones, particularly refugee camps. In so doing, it extends military control from the peripheries of the built-up Palestinian areas—the so-called Areas B and C—into the very heart of Area A.
- 2 Forensic Architecture (FA) has monitored the Israeli military’s conduct during its operations in the West Bank, particularly in the Jenin, Tulkarm, Nur Shams, and al-Far’a refugee camps, between 21 January 2025 and 24 April 2025. We have reviewed and analysed witness statements, satellite imagery, and hundreds of videos. Methodologically, the collection and analysis of evidence relating to potential ceasefire violations follows the methods deployed in the development of FA’s October 2024 report ‘A Spatial Analysis of the Israeli Military’s Conduct in Gaza since October 2023’.<sup>1</sup> Based on this analysis, we observe that the character of the operations carried out by the Israeli military in the West Bank bear notable similarities to the patterns of conduct that we documented in Gaza between October 2023 and January 2025.
- 3 Observed patterns include:
  - (a) Imposition of ‘spatial control’ mechanisms, including military routes, outposts, checkpoints, barriers and roadblocks
  - (b) Widespread destruction of homes and infrastructure using armoured bulldozers
  - (c) Displacement of the civilian population using evacuation orders
  - (d) Attacks on medical infrastructure

---

<sup>1</sup> Forensic Architecture, ‘A Spatial Analysis of the Israeli Military’s Conduct in Gaza since October 2023’ (2024) <[https://content.forensic-architecture.org/wp-content/uploads/2024/10/FA\\_A-Spatial-Analysis-of-the-Israeli-militarys-conduct-in-Gaza-since-October-2023.pdf](https://content.forensic-architecture.org/wp-content/uploads/2024/10/FA_A-Spatial-Analysis-of-the-Israeli-militarys-conduct-in-Gaza-since-October-2023.pdf)> accessed 18 February 2025

## B DECLARATIONS OF INTENT:

- 4 Statements by Israeli officials indicate that Israeli military conduct in the West Bank was directly informed by their conduct in Gaza between October 2023 and January 2025. Our findings further support the UN description of recent Israeli military actions in the West Bank as ‘a spillover of the war in Gaza’.<sup>2</sup>
- 5 The following are a selection of relevant statements by Israeli government officials:
- 6 On **28 August 2024**, while the Israeli military was conducting an operation in the Jenin refugee camp, Foreign Minister **Israel Katz** (he would be named Defence Minister in November 2024) declared Israel’s intention to apply ‘the same determination’ to eliminating supposed threats within the camps in the northern West Bank as was applied in Gaza, **‘including the temporary evacuation of Palestinian residents and any necessary measures’**.<sup>3</sup>
- 7 On 22 January 2025, as Defence Minister **Israel Katz** stated that Israeli forces were applying lessons learned from the Israeli military campaign in Gaza to the ongoing operation in Jenin. He emphasised that this marked a shift in the military’s security approach in the West Bank and was **‘the first lesson from the method of repeated raids in Gaza’**.<sup>4</sup>
- 8 On 10 February 2025, Israeli Finance Minister **Bezalel Smotrich** stated: **‘Tulkarem and Jenin will look like Jabalia and Shuja'iyya. Nablus and Ramallah will resemble Rafah and Khan Younis. They will also be turned into uninhabitable ruins, and their residents will be forced to migrate and seek a new life in other countries.’**<sup>5</sup>

### 1 Patterns

- 9 In the October 2024 report titled 'A Spatial Analysis of the Israeli Military’s Conduct in Gaza since October 2023', Forensic Architecture analysed multiple categories of conduct, including:
- 10 Displacement (chapter 3); the targeting of medical infrastructure (chapter 5); attacks on infrastructure, including homes schools and public buildings (chapter 6); and targeting of aid (chapter 7).
- 11 In this document, we note our preliminary observations of Israeli military conduct in the West Bank since 21 January 2025. We have classified the types of conduct observed according to the above categories to facilitate comparison with the conduct of the Israeli military in Gaza since October 2023.

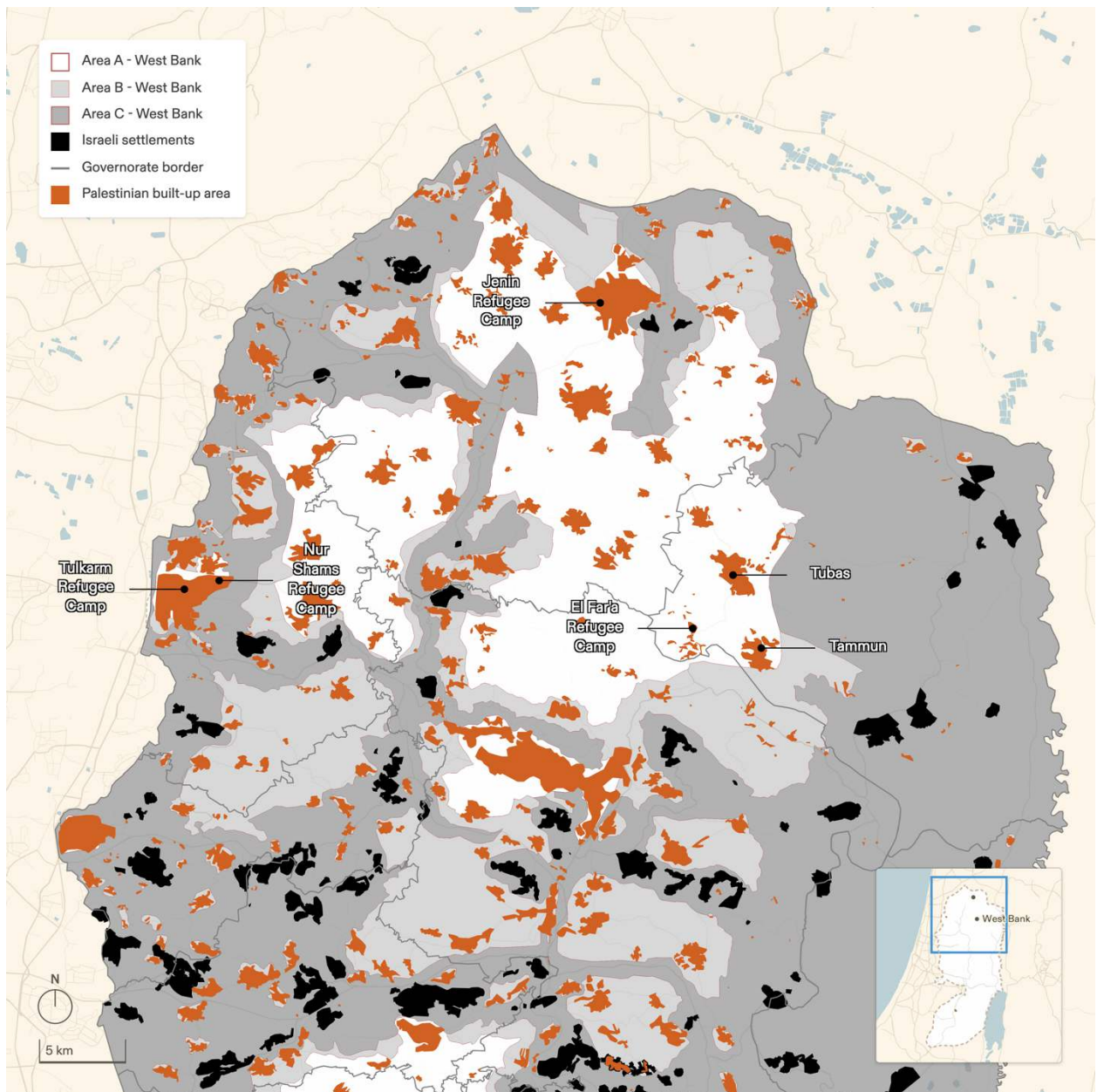
<sup>2</sup> <https://www.unrwa.org/newsroom/official-statements/large-scale-forced-displacement-west-bank-impacts-40000-people>

<sup>3</sup> <https://x.com/IsraelMFA/status/1828657826375352753>

<sup>4</sup> <https://www.reuters.com/world/middle-east/israeli-minister-says-army-applying-lessons-gaza-west-bank-operation-2025-01-22>

<sup>5</sup> <https://www.aa.com.tr/en/middle-east/israel-s-smotrich-vows-escalation-against-palestinians-in-west-bank-threatens-gaza-like-fate/3477676>

<https://x.com/MiddleEastEye/status/1889204023775100930>



**Figure 1.** Map of the northern West Bank showing the locations and names of areas targeted after 21 January 2025, as analysed in this report.



## C SPATIAL CONTROL

- 12 Our analysis of the destruction of civilian infrastructure in the West Bank reveals that the majority of destruction has not been random and haphazard but rather reflects a systematic and premeditated approach aimed at establishing routes wide enough for Israeli armoured vehicles to enter and navigate within refugee camps. These routes have been created by widening existing roads through the demolition of homes, private gardens, and adjacent properties (see [Figure 9](#)). In other cases, entirely new routes have been opened by razing built-up urban fabric (see [Figure 12](#)). This network of military routes is clearly visible in the Jenin refugee camp (see [Figure 2](#)), and evidence indicates that the same tactic is, at the time of publication, being repeated in the Nur Shams and Tulkarm refugee camps (see [Figure 20](#) and [Figure 23](#)). While this type of destruction has been recorded throughout the history of the Israeli occupation (most notably in Jabalia in 1971 and the refugee camp of Jenin in 2002), it has become a common practice in Gaza since October 2023, with Israeli bulldozers opening routes and corridors through the urban fabric of the camps, cities and villages of the Strip.<sup>6</sup> These new corridors facilitate ongoing military presence, population control, repeated invasions, and the creation of distinct clusters of buildings within the camps or urban areas, which can then be easily isolated and targeted during a subsequent military invasion. The following incidents point to the gradual implementation of this system of spatial control.
- 1 On **2 February 2025**, four videos were published showing the synchronised detonation of at least sixteen buildings in the Jenin refugee camp (see [Figure 3](#) and [Figure 4](#)). The locations of these destroyed buildings largely coincide with the areas where the Israeli military has been conducting its clearing operations to establish new military routes (see [Figure 5](#)).<sup>7</sup> The Israeli military stated that it demolished 23 buildings in the camp and released a video documenting the process.<sup>8</sup> Another video published on social media that appears to have been shot by Israeli soldiers shows the same buildings being demolished while the soldiers can be heard cheering in the background.<sup>9</sup> (ID **50202-47188**)
- 13 On **21 March 2025**, a map credited to the Israeli military was published, marking the locations of 95 buildings slated for demolition in the Jenin refugee camp (see [Figure 6](#)).<sup>10</sup> While most of these buildings were residential, the marked buildings also included public structures like the Jenin Social Club. The locations of these buildings and their layout along snaking paths through the built fabric of the camp are consistent with the military creation of new roads or corridors (see [Figure 6](#) and [Figure 7](#)). Analysis of subsequent satellite imagery reveals that by 27 March 2025, several of these structures, including the club, had been demolished (see [Figure 7](#)).
- 14 Analysis of satellite imagery and video footage reveals the active and repeated use of newly established military routes in the Jenin refugee camp by Israeli armoured vehicles (see [Figure](#)

<sup>6</sup> See Chapter 2 ('Spatial Control'), Forensic Architecture, 'A Spatial Analysis of the Israeli Military's Conduct in Gaza since October 2023' (2024) <[https://content.forensic-architecture.org/wp-content/uploads/2024/10/FA\\_A-Spatial-Analysis-of-the-Israeli-militarys-conduct-in-Gaza-since-October-2023.pdf](https://content.forensic-architecture.org/wp-content/uploads/2024/10/FA_A-Spatial-Analysis-of-the-Israeli-militarys-conduct-in-Gaza-since-October-2023.pdf)> accessed 18 February 2025

<sup>7</sup> IDs: 50202-91200, 50202-88438, 50202-53831, 50202-47188

<sup>8</sup> <https://www.idf.il/267665>

<sup>9</sup> <https://x.com/EyeonPalestine/status/1886098801015902431>

<sup>10</sup> <https://www.haaretz.com/israel-news/2025-03-21/ty-article/.premium/israeli-army-to-demolish-at-least-180-homes-in-west-bank-palestinian-refugee-camps/00000195-b8c7-d093-afd7-becff0e70000>

- 15). The imagery also documents the creation of makeshift military bases within the camp, notably in the centre of the Jourat al-Dahab neighbourhood (see Figure 9, Figure 10, and Figure 11).
- 15 We identified at least two makeshift checkpoints constructed from earth berms on key roads leading into the Jenin refugee camp (see Figure 13).
- 16 According to reports, residents displaced from the Jenin refugee camp who attempted to return were either stopped by Israeli soldiers or detained upon arrival.<sup>11</sup> Additionally, videos published on 23 April 2025, show the Israeli military installing metal barriers at three different locations around and leading to Jenin refugee camp, including one barrier at the main gate of the camp (see Figure 14).
- 17 We have verified eighteen incidents of Palestinians being detained by the Israeli military (see incident **50122-12414** in Figure 17 for one example).
- 18 We verified additional incidents involving the use of civilian infrastructure within and around multiple camps as makeshift detention centres (see Figure 18 and Figure 22) and military posts, as in the case of Sheikh Zayed Mosque in Jenin refugee camp (see Figure 19).

---

<sup>11</sup> Check IDs: 50219-40917, 50406-65438



**Figure 2.** The Israeli-imposed system of spatial control applied to the Jenin refugee camp. The destruction of buildings within the camp, actual and projected, may be read as a means of creating new military routes through its dense urban fabric. 'Destroyed buildings' and 'cleared areas' refer to buildings and roads demolished within the camp. 'Projected clearing' refers to buildings that the military intends to destroy (according to the military plan on page 5), but which have not yet been demolished. 'Projected connection routes' refer to existing roads meant to join with the newly created routes.

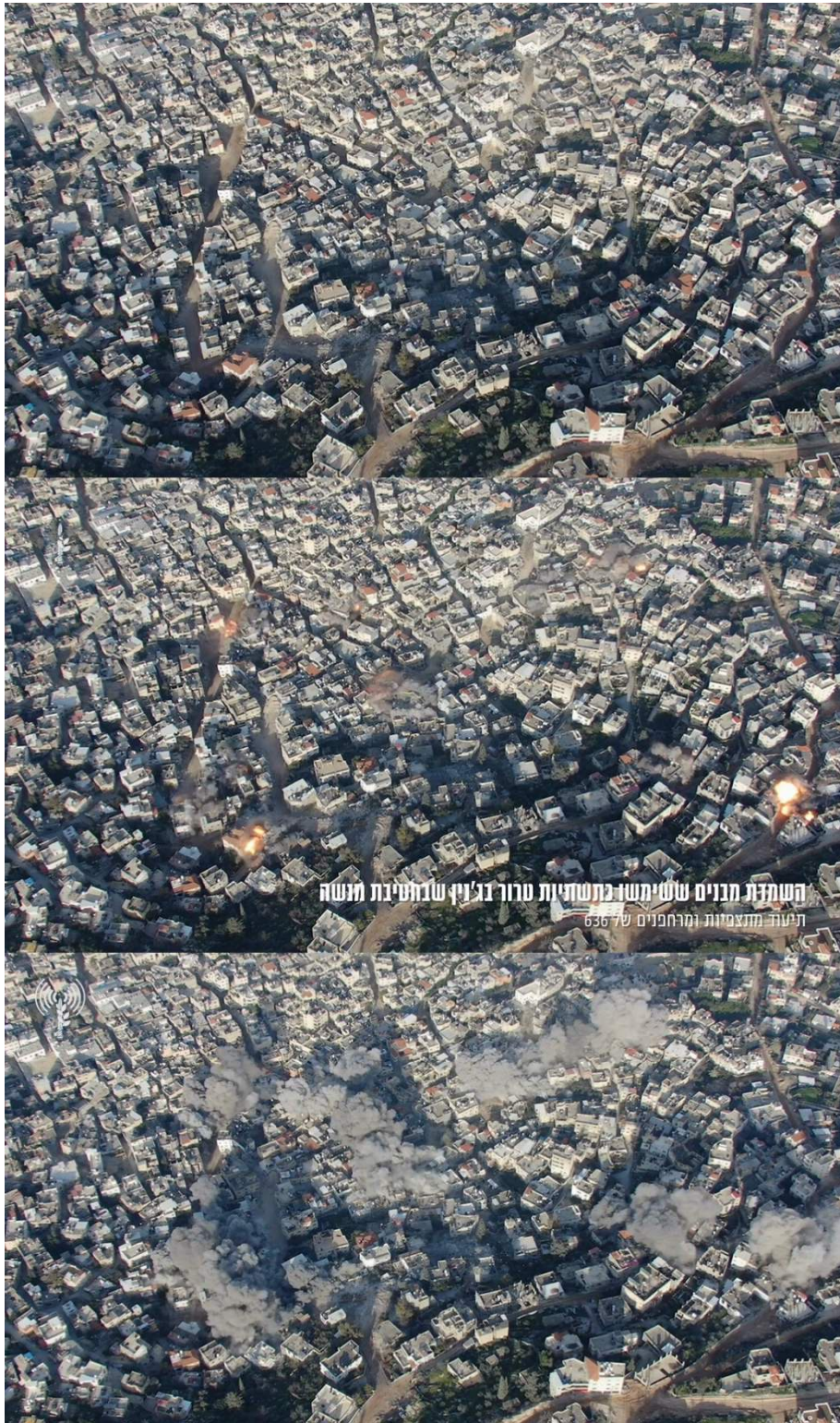


**Figure 3.** A still frame from video **50202-65890**, published on 2 February 2025, showing the detonation of several buildings in Jenin refugee camp by the Israeli military.<sup>12</sup>

---

<sup>12</sup> <https://x.com/EyeonPalestine/status/1886055482533511611>





**Figure 4.** Still frames of video **50202-88438** published by the Israeli military on 2 February 2025 show the simultaneous destruction of multiple Palestinian homes in Jenin refugee camp (see locations of destroyed properties in **Figure 5**).





**Figure 5.** Locations of homes (outlined in yellow) seen being destroyed through controlled detonations in a video (50202-88438) published on 2 February 2025, as seen in **Figure 4**.



**Figure 6.** An aerial image of the Jenin refugee camp on which the Israeli military marked with red circles homes intended for demolition. This image was published by Haaretz on 21 March 2025.<sup>13</sup>

---

<sup>13</sup> <https://www.haaretz.com/israel-news/2025-03-21/ty-article/.premium/israeli-army-to-demolish-at-least-180-homes-in-west-bank-palestinian-refugee-camps/00000195-b8c7-d093-afd7-becff0e70000>





**Figure 7.** The locations of homes destroyed (solid red) and marked for demolition (red outline, based on the annotations in **Figure 6**) in the Jenin refugee camp. Several of these buildings appear to already be destroyed in a satellite image from Planet dated 27 March 2025.



Figure 8. Areas cleared and projected for clearing (based on the demolition plans noted in Figure 6) in the Jenin refugee camp. Yellow rectangles highlight areas for detailed analysis in Figure 9, Figure 12, and Figure 13.





**Figure 9.** A sequence of Planet satellite images taken between 4 and 27 March 2025 show parts of Jourat al-Dahab neighbourhood in Jenin Refugee Camp destroyed and cleared to be used as a makeshift military base (Detail 1 in [Figure 8](#)).





**Figure 10.** Frames from video 50209-84102, published on 9 February, show an ungrounded road, and vehicles belonging to the Israeli military stationed at a makeshift outpost (Figure 9) in Jourat al-Dahab neighbourhood in Jenin Refugee Camp (see location in Figure 8).



**Figure 11.** Image 50401-50721, published on 1 April, shows the Israeli military stationed at a makeshift outpost (Figure 9) in Jourat al-Dahab neighbourhood in Jenin refugee camp (see location in Figure 8).





**Figure 12.** Comparison of Planet satellite images from 28 January and 27 March 2025 show a new raid route constructed by the Israeli military through a series of homes destroyed by bulldozers in the al-Jabryat neighbourhood in Jenin (Detail 2 in Figure 8).



**Figure 13.** Planet satellite images from 4 March and 27 March 2025 show the location of an Israeli military position (Detail 3 in Figure 8). The Israeli military constructed an earth berm to control access to the camp from the southeast. Additional videos captured from the ground show the Israeli military stationed at the same location on 25 and 26 February (IDs: 50225-82973, 50225-50849, 50224-30111).



Figure 14. Location of barriers installed by the Israeli military on 23 April 2025.





**Figure 15.** Still frames from video **50126-83292**, published on 26 January, show military vehicles moving along a route they have cleared in Jenin refugee camp. In the right-hand frame, Israeli soldiers can be seen positioned atop a residential building.



**Figure 16.** A frame from video **50317-96621**, published on 17 March, shows Israeli soldiers moving in the direction of the centre of Jenin refugee camp through a newly established military route.



**Figure 17.** Frames from video **50122-12414** showing an ungrounded asphalt road and visible groundwork within Jenin refugee camp. Israeli soldiers are seen detaining Palestinians in the area.





**Figure 18.** Video 50124-68258 shows the detention of Palestinians at a makeshift Israeli military outpost on the outskirts of Jenin refugee camp.



**Figure 19.** Image **50422-62835**, published on 22 April 2025, shows the Israeli army using the Sheikh Zayed Mosque in Jenin refugee camp as a military post.





Figure 20. Map of Nur Shams refugee camp showing the path of a cleared military route. The yellow frame indicates the location depicted in the images in Figure 21.





**Figure 21.** Planet satellite images from 11 January and 11 March show before-and-after views of an area in Nur Shams refugee camp that was cleared to create a military route (Detail 5 in **Figure 20**).

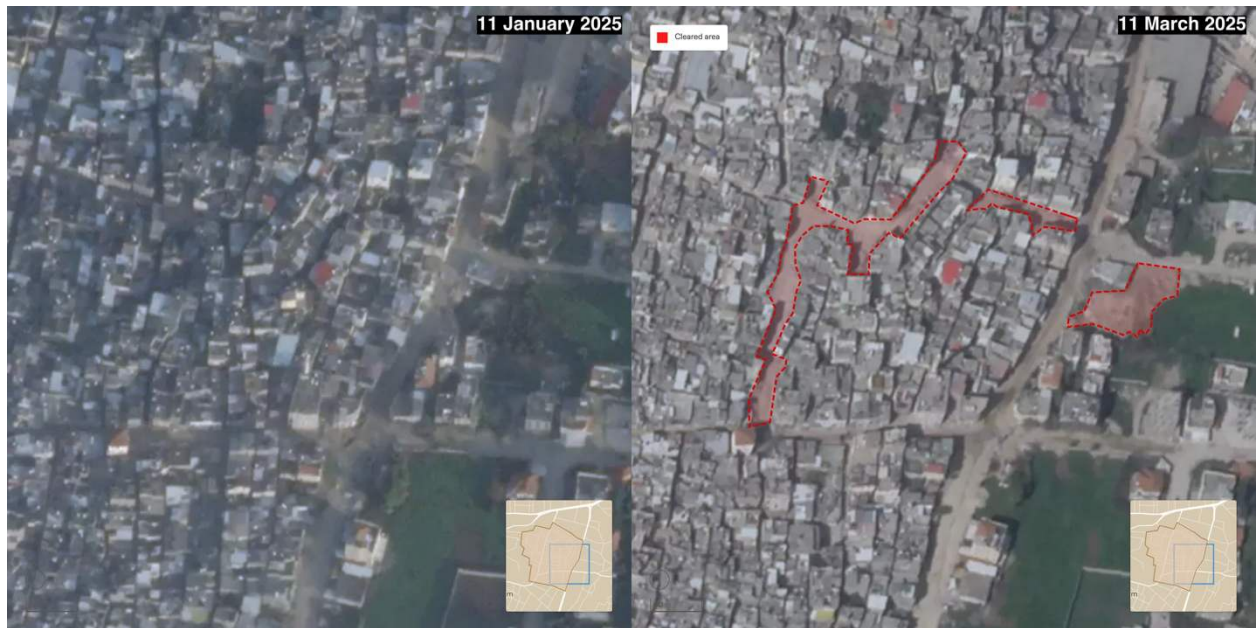


**Figure 22.** Still frames from video 50103-97303 show an industrial square in Nur Shams refugee camp repurposed as a makeshift interrogation and detention centre. The footage captures Israeli soldiers and military vehicles transferring Palestinian prisoners.



**Figure 23.** Map of Tulkarm refugee camp showing the path of a cleared military route. The yellow frame indicates the location depicted in the images in **Figure 24**.





**Figure 24.** Planet satellite images from 11 January and 11 March show before-and-after views of an area in Tulkarm refugee camp that was cleared to create a military route (Detail 6 in [Figure 23](#)).

## D DESTRUCTION OF INFRASTRUCTURE

- 19 In addition to the strategic destruction addressed in the previous section, aimed at establishing military routes within refugee camps and their surroundings, the Israeli military has also caused widespread damage to civilian infrastructure in these locations, using armoured bulldozers, controlled detonation, and airstrikes. Israel resumed the use of airstrikes in the West Bank on 3 October 2024, marking the first such instance since the Second Intifada (2000–2005).
- 20 We verified over 200 incidents evidencing the destruction of buildings (see [Figure 25](#)) and street network (see [Figure 26](#)) in Jenin refugee camp (see [Figure 27](#)), Nur Shams refugee camp (see [Figure 28](#)), Tulkarm city and camp (see [Figure 29](#)), and al-Far'a refugee camp (see [Figure 30](#)). Destruction of civilian infrastructure using armoured bulldozers frequently coincides with the destruction of paved roads, leaving behind rubble and exposed earth that precludes or restricts passage both on foot and in a vehicle.
- 21 We have verified multiple instances in which armoured bulldozers and vehicles deliberately caused extensive damage to civilian property, including parked vehicles (see [Figure 31](#)), food carts (see [Figure 32](#)), and agricultural infrastructure. In a video published on 4 February 2025, Israeli military bulldozers are seen uprooting olive trees and damaging greenhouses in the town of Tamun, near al-Far'a refugee camp (see [Figure 33](#)).
- 22 According to the United Nations, there have been at least 38 airstrikes in the West Bank in 2025.<sup>14</sup> According to OCHA, between 3 and 9 February 2025, seventeen airstrikes by Israeli forces were documented in the West Bank, primarily targeting Jenin refugee camp and the town of Tamun<sup>15</sup>. We have verified the location of six airstrikes in Jenin between 27 January and additional strikes in Tamun and Tulkarm and Nur Shams refugee camps.<sup>16</sup>

<sup>14</sup> <https://www.unrwa.org/newsroom/official-statements/large-scale-forced-displacement-west-bank-impacts-40000-people>

<sup>15</sup> <https://www.unrwa.org/resources/reports/unrwa-situation-report-159-situation-gaza-strip-and-west-bank-including-east-jerusalem>

<sup>16</sup> Incidents IDs: 50127-48341, 50129-15055, 50129-63940



Figure 25. Destruction of buildings and homes in the refugee camps of Jenin, Nur Shams, and Tulkarm in the West Bank.





**Figure 26.** Frames from multiple videos showing the ungrounding of the road network in the refugee camps of Jenin, Nur Shams, and Tulkarm in the West Bank.

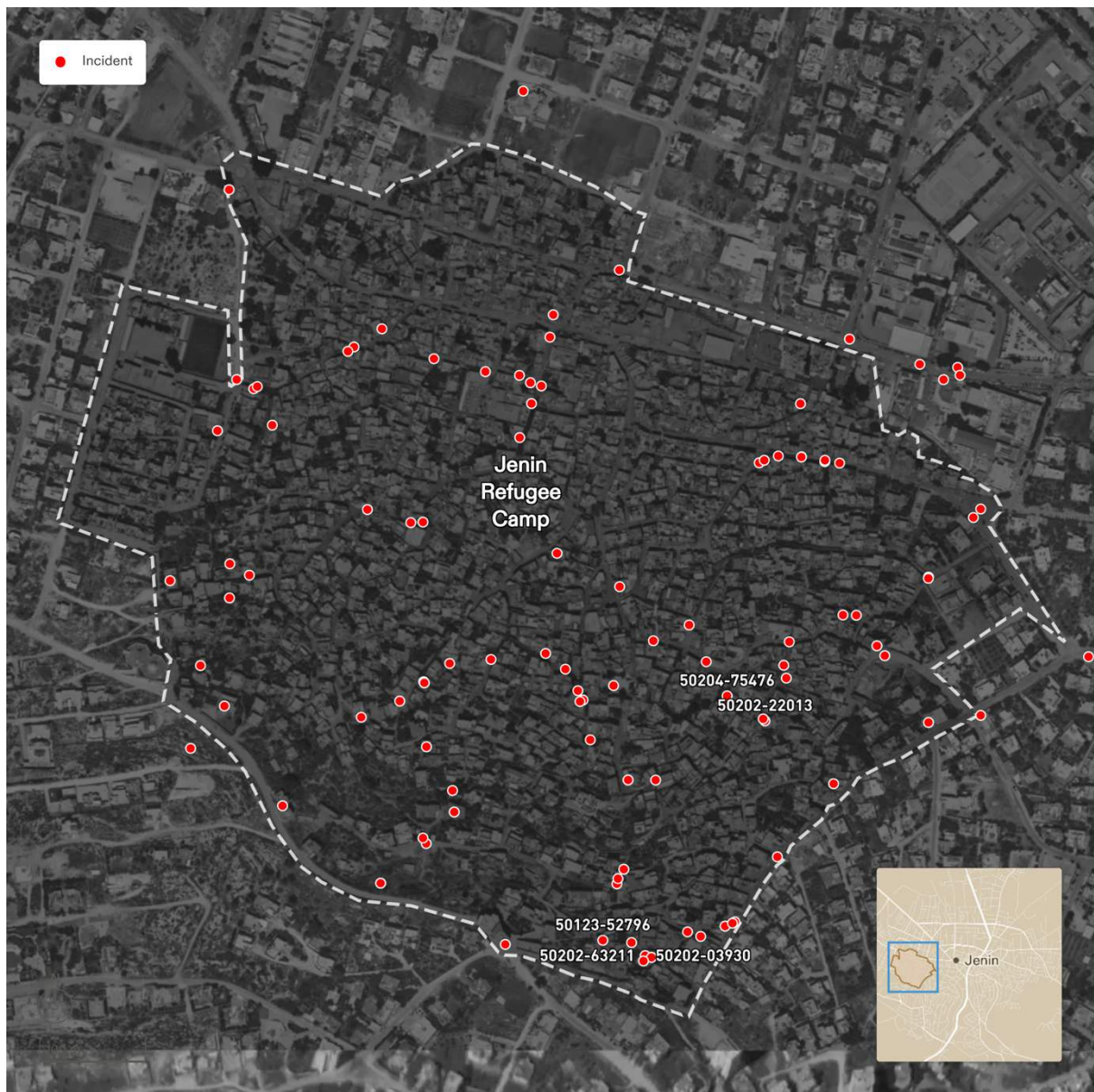


Figure 27. Map of verified incidents (marked in red) involving the destruction of buildings and roads in Jenin.





**Figure 28.** Map of verified incidents (marked in red) involving the destruction of buildings and roads in Nur Shams refugee camp.





Figure 29. Map of verified incidents involving the destruction of buildings and roads in Tulkarm refugee camp.



**Figure 30.** Map of verified incidents (marked in red) involving the destruction of buildings and roads in al-Far'a refugee camp.





**Figure 31.** Frames from video **50210-41091** show an Israeli armoured bulldozer destroying a parked vehicle and the wall of an adjacent building while ungrounding a road in al-Salaheen neighbourhood in Nur Shams refugee camp.





**Figure 32.** Still frames from video **50202-91393** show Israeli armoured vehicles destroying a food stall in the vegetable market in Tulkarm.



**Figure 33.** Video 50204-96385 shows Israeli military bulldozers uprooting olive trees and ploughing through greenhouses in the Palestinian town of Tamun.

## E DISPLACEMENT

- 24 Forensic Architecture has observed the mass displacement of residents of the Palestinian refugee camps of **Jenin, Tulkarm, Nur Shams, and al-Far'a** between 21 January and 24 April 2025. As in Gaza, displacement in the West Bank has predominantly been facilitated through warnings or evacuation orders delivered by the military, which have been similarly weaponised against the local population.<sup>17</sup> Once 'cleared', these areas under evacuation order also frequently became kill zones in which the remaining residents were subjected to indiscriminate military fire. Return to these sites has often been obstructed or complicated by sustained military presence. Such engineered mass displacement has allowed the Israeli military to reshape these built environments unobstructed, following principles laid out in the prior section on spatial control. According to a UN report from 10 February 2025, 40,000 Palestinians have been displaced from the refugee camps of **Jenin, Tulkarm, Nur Shams, and al-Far'a** since the start of operation 'Iron Wall' by the Israeli military on 21 January.<sup>18</sup>
- 25 We have verified and geolocated over fifty videos published between 21 January and 24 April 2025 evidencing the forced displacement of Palestinians from Jenin refugee camp (see [Figure 34](#)), al-Far'a refugee camp (see [Figure 36](#)), Nur Shams refugee camp (see [Figure 39](#)), and Tulkarm city and refugee camp (see [Figure 42](#)).
- 26 On **22 January 2025**, a day after the Israeli invasion of Jenin began, a video and an image were published depicting Palestinians being displaced from the Jenin refugee camp (see [Figure 35](#)).<sup>19</sup>
- 27 On **9 February 2025**, two videos were published showing displaced Palestinians queueing behind a makeshift military checkpoint while evacuating **al-Far'a refugee camp** (see [Figure 37](#) and [Figure 38](#)).<sup>20</sup>
- 28 A video published on **9 February 2025** shows Israeli soldiers attacking Palestinian women and children as they attempted to evacuate **Nur Shams refugee camp** (see [Figure 40](#)).<sup>21</sup> Another video, published on **10 February**, shows what appears to be the same group of civilians heading back to the camp in the rain along a destroyed road, carrying a white flag (ID: 50210-43232).<sup>22</sup>
- 29 In a video published on **12 February 2025**, the Israeli military, using loudspeakers, ordered Palestinian residents to evacuate their homes in the **Nur Shams refugee camp** (ID: 50212-34046).<sup>23</sup>
- 30 A video published on **13 February 2025** shows Palestinians being forcibly displaced from **Nur Shams Refugee Camp** and forced to pass through a group of Israeli soldiers (see [Figure 41](#)).<sup>24</sup>

<sup>17</sup> See Chapter 3 ('Displacement'), Forensic Architecture, 'A Spatial Analysis of the Israeli Military's Conduct in Gaza since October 2023' (2024) <[https://content.forensic-architecture.org/wp-content/uploads/2024/10/FA\\_A-Spatial-Analysis-of-the-Israeli-militarys-conduct-in-Gaza-since-October-2023.pdf](https://content.forensic-architecture.org/wp-content/uploads/2024/10/FA_A-Spatial-Analysis-of-the-Israeli-militarys-conduct-in-Gaza-since-October-2023.pdf)> accessed 18 February 2025

<sup>18</sup> <https://www.unrwa.org/newsroom/official-statements/large-scale-forced-displacement-west-bank-impacts-40000-people>

<sup>19</sup> <https://www.reuters.com/world/middle-east/israeli-minister-says-army-applying-lessons-gaza-west-bank-operation-2025-01-22/>

<sup>20</sup> Source of video A: [https://x.com/anas\\_shtaya/status/1888566583456313684](https://x.com/anas_shtaya/status/1888566583456313684), source of video B:

<https://x.com/EyeonPalestine/status/1888518238356504920>

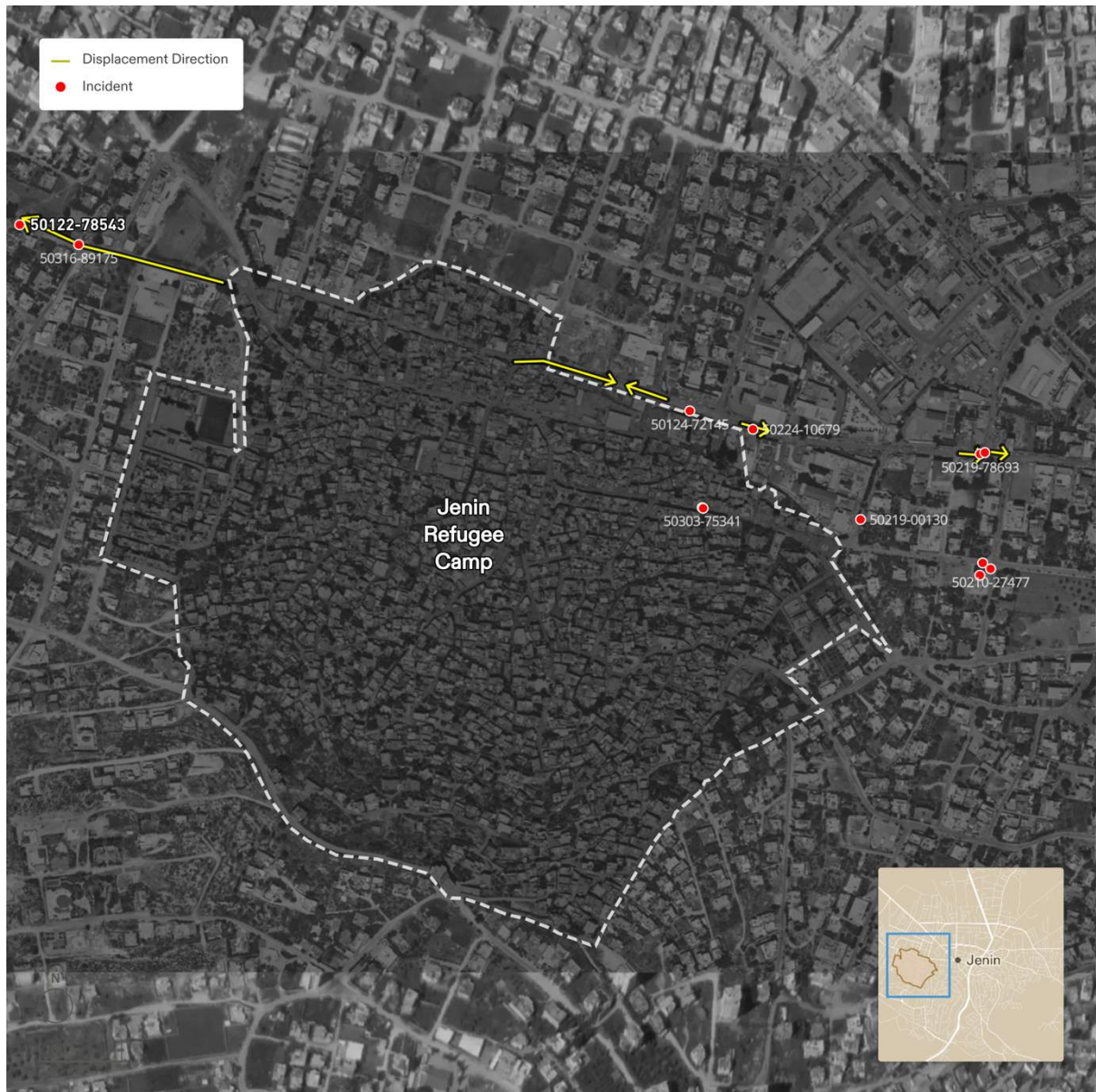
<sup>21</sup> <https://x.com/EyeonPalestine/status/1888562330809561385>

<sup>22</sup> <https://x.com/EyeonPalestine/status/1888897668866314454>

<sup>23</sup> <https://x.com/EyeonPalestine/status/1889609525042233734>

<sup>24</sup> <https://x.com/AlarabyTV/status/1890105494624198849>





**Figure 34.** A map of Jenin refugee camp marked with the locations of videos showing instances of civilian displacement from the camp. The arrows indicate the directions of civilian movement.<sup>25</sup>

<sup>25</sup> <https://www.reuters.com/world/middle-east/israeli-minister-says-army-applying-lessons-gaza-west-bank-operation-2025-01-22/>



**Figure 35.** Footage published by Reuters on 22 January 2025 shows Palestinians displaced from Jenin refugee camp (ID: 50122-78543 – see location in [Figure 34](#)).





**Figure 36.** Multiple videos published on 8 and 9 February 2025 show Palestinian civilians displaced from al-Far'a refugee camp. The arrows indicate the direction of civilian movement.<sup>26</sup>

<sup>26</sup> Source of video A: [https://x.com/anas\\_shtaya/status/1888566583456313684](https://x.com/anas_shtaya/status/1888566583456313684), source of video B: <https://x.com/EyeonPalestine/status/1888518238356504920>

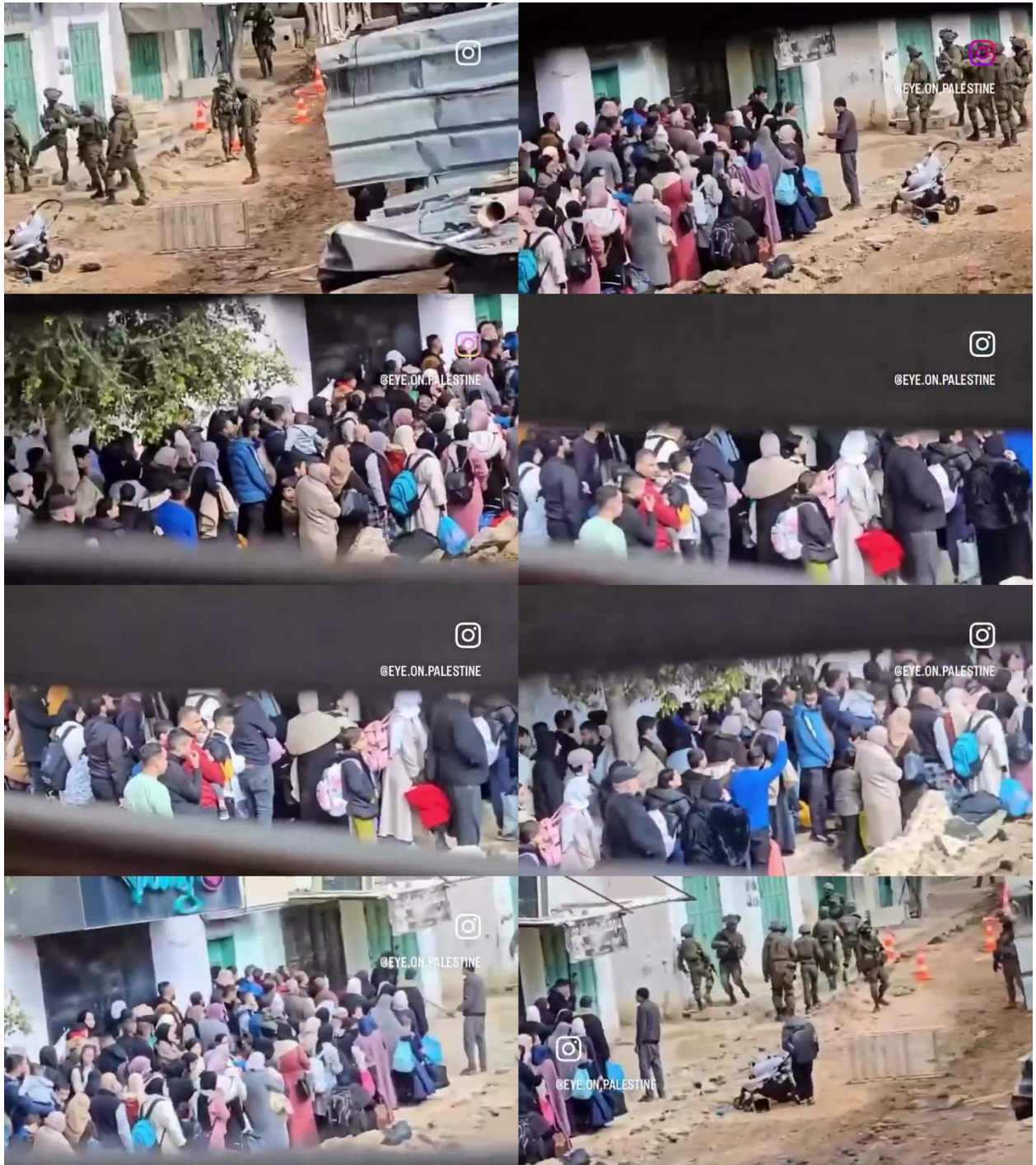




**Figure 37.** Still frames from video **50209-64920**, published on 9 February 2025, showing Palestinian civilians displaced from al-Far'a refugee camp (see location in **Figure 36**).<sup>27</sup>

---

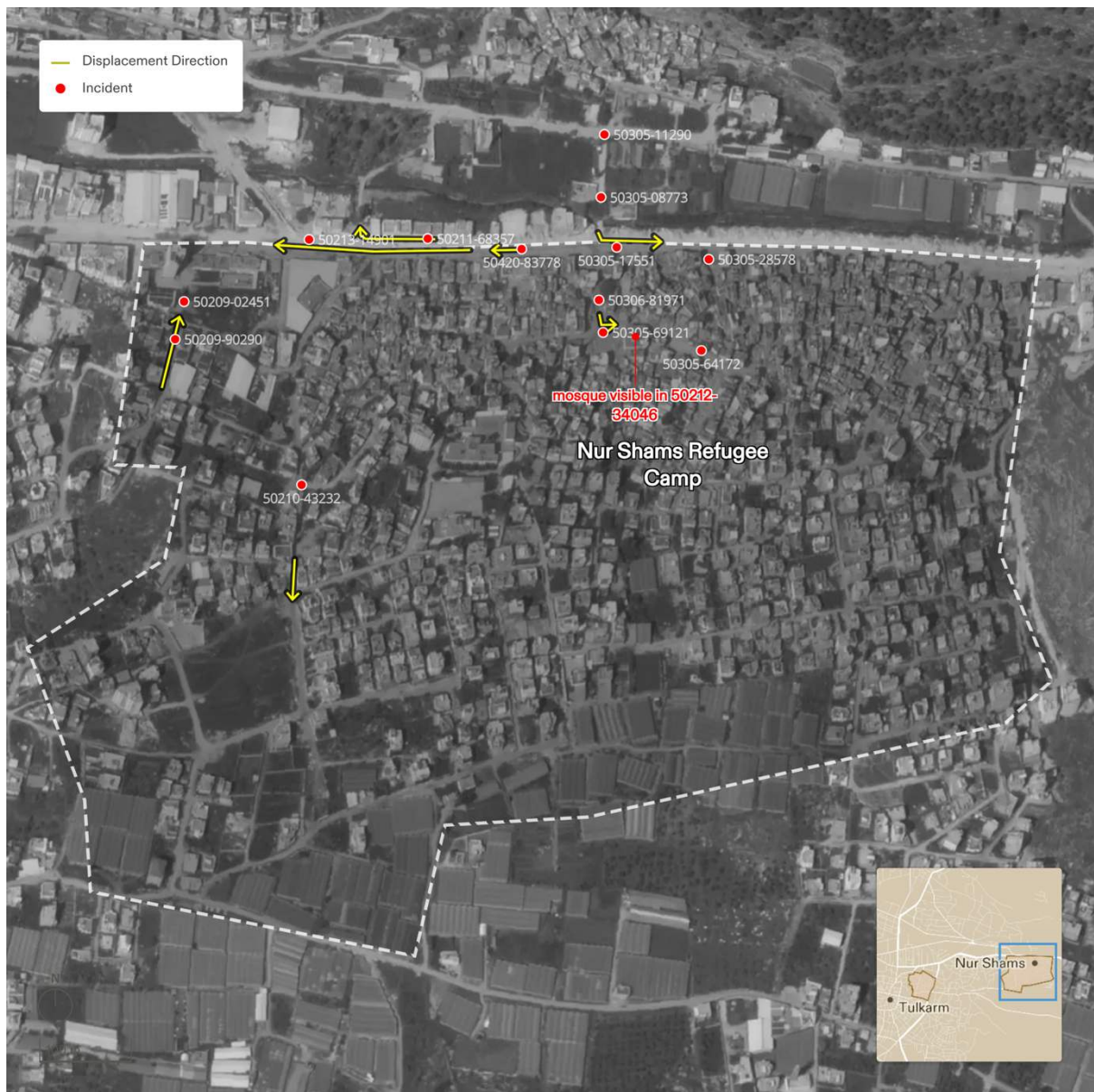
<sup>27</sup> [https://x.com/anas\\_shtaya/status/1888566583456313684](https://x.com/anas_shtaya/status/1888566583456313684)



**Figure 38.** Still frames from video 50209-37645, published on 9 February 2025, showing Palestinians civilians displaced from al-Far'a refugee camp (see location in Figure 36).<sup>28</sup>

<sup>28</sup> <https://x.com/EyeonPalestine/status/1888518238356504920>





**Figure 39.** A map of Nur Shams refugee camp near Tulkarm, marking with red dots the location of videos showing instances of civilian displacement. The yellow arrows indicate the direction of civilian movement.<sup>29</sup>

<sup>29</sup> Source of Video A: <https://x.com/EyeonPalestine/status/1889609525042233734>, source of Video B: <https://x.com/AlarabyTV/status/1890105494624198849>, source of Video C: <https://x.com/EyeonPalestine/status/1888562330809561385>, source of Video D: <https://x.com/EyeonPalestine/status/1888897668866314454>





**Figure 40.** Still frames from video **50209-90290**, published on 9 February 2025, showing Israeli soldiers attacking Palestinian civilians as they attempt to flee Nur Shams refugee camp (see location in **Figure 39**).<sup>30</sup>

<sup>30</sup> <https://x.com/EyeonPalestine/status/1888562330809561385>



**Figure 41.** Still frames from video **50213-14901**, published on 13 February 2025, show civilians displaced from Nur Shams refugee camp in Tulkarm (see location in **Figure 39**). An ungrounded asphalt road and earthworks are visible at the site. In the first frame a soldier is seen pointing his rifle directly at the camera of the Al-Arabi TV team.<sup>31</sup>

<sup>31</sup> <https://x.com/AlarabyTV/status/1890105494624198849>





**Figure 42.** A map of Tulkarm refugee camp marking the location of videos showing instances of civilian displacement. The yellow arrows indicating the direction of civilian movement.

## **F TARGETING OF MEDICAL INFRASTRUCTURE**

- 31 Israel's attacks on Gaza after October 2023 involved unprecedented targeting of the Strip's medical infrastructure. Forensic Architecture have documented the spill-off of this type of attack in the context of the Israeli campaign in the West Bank: since 21 January 2025, Israeli attacks on medical infrastructure in the West Bank have included placing hospitals under siege, obstructing ambulance access to areas with injured civilians, targeting medical personnel, and using at least one medical facility as a detention and interrogation centre.



- 32 On **21 January 2025**, reports and visual evidence indicate that multiple hospitals in Jenin were surrounded by Israeli military, including Khalil Suleiman Hospital (also known as Jenin Governmental Hospital), the al-Amal Hospital, and al-Razi Hospital (see **Figure 43**).<sup>32</sup>
- 33 According to a statement made by the director of Jenin Government Hospital on **21 January 2025**, three doctors and two nurses were reportedly injured in the vicinity of Khalil Suleiman Hospital, al-Amal Hospital, and al-Razi Hospital in Jenin.<sup>33</sup>
- 34 A video published on **21 January 2025** showed Israeli armoured vehicles obstructing an ambulance in front of al-Amal Hospital in Jenin (see **Figure 43**).<sup>34</sup>
- 35 **22 January 2025**: Civilians and hospital staff reported that the main road leading to Khalil Suleiman Hospital in Jenin was destroyed by Israeli military bulldozers, and access to the hospital was blocked by earth berms.<sup>35</sup>
- 36 The director of Khalil Suleiman Hospital told Al Jazeera on **4 February 2025** that the Israeli military was preventing ambulances and medical teams from reaching the Jenin refugee camp.<sup>36</sup> A statement from the Jenin Governorate on the same day expressed concern about casualties and injuries inside the camp being exacerbated by the military obstruction of access for ambulance crews.<sup>37</sup>
- 37 According to a social media post from **11 February 2025**, the Israeli military obstructed the movement of ambulances in the vicinity of the Jenin refugee camp.<sup>38</sup>
- 38 According to an UNWRA report, the Israeli military forcibly entered the UNRWA Aroub Camp Health Centre in southern West Bank on **12 February 2025** and used it for the detention and interrogation of dozens of Palestinian residents from the camp (see **Figure 47**).<sup>39</sup>

<sup>32</sup> <https://t.me/QudsN/520924>,  
<https://t.me/QudsN/520924>, <https://www.facebook.com/reel/499493879439503>,

<sup>33</sup> <https://t.me/QudsN/521056>,  
<https://www.theguardian.com/world/2025/jan/22/israeli-forces-surround-palestinian-hospital-refugee-camp-west-bank>

<sup>34</sup> <https://t.me/QudsN/520924>

<sup>35</sup> <https://www.middleeasteye.net/news/israeli-army-and-palestinian-authority-besiege-and-raid-jenin-hospitals>

<sup>36</sup> <https://x.com/AJABreaking/status/1886674983541215666>

<sup>37</sup> <https://x.com/AJABreaking/status/1886674605965766680>

<sup>38</sup> <https://x.com/EyeonPalestine/status/1889245589453357321>

<sup>39</sup> <https://www.unrwa.org/newsroom/official-statements/west-bank-israeli-security-forces-use-unrwa-health-centre-temporary-detention-site-southern-West-Bank>



**Figure 43.** We analysed and geolocated incidents between 21 January and 11 February 2025 showing the Israeli military obstructing the movement of ambulances on a road where multiple medical facilities are located leading into the Jenin refugee camp. These findings confirm testimonies describing the imposition of a siege on these hospitals.



**Figure 44.** Frames from video **50128-57987**, published on 28 January 2025, showing Israeli armoured vehicles in the vicinity of Jenin Government Hospital (see location in **Figure 43**).<sup>40</sup>

<sup>40</sup> <https://t.me/QudsN/524068>





Figure 45. Still frames from video 50125-51952, published on 25 January 2025, showing the destruction of the street network around Jenin Government Hospital and the Israeli army stationed in the area (see location in Figure 43) <sup>41</sup>

<sup>41</sup> <https://t.me/QudsN/522532>



Figure 46. Red dots mark location of attacks on medical infrastructure in Tulkarm, near the Tulkarm refugee camp.





**Figure 47.** Map of al-Aroub refugee camp, north Hebron, marking (in red) the location of the UNRWA Aroub Camp Health Centre, which was used as a detention centre by the Israeli military on 12 February 2025.<sup>42</sup>

<sup>42</sup> <https://x.com/qudsn/status/1890310090462245081>





**Figure 48.** Video 50212-96126 (left) and image 50212-06116 (right) show handcuffed Palestinians within and outside the al-Aroub camp health centre (the white-faced building and wall with light blue fencing), being used as a detention centre. The location of the medical centre is marked in the map above.

## G INCIDENT IDS

ID	Date	Latitude	Longitude	Source
50212-21695	2025-02-12	32.291861	35.345111	<a href="https://x.com/EyeonPalestine/status/1889678429051629613">https://x.com/EyeonPalestine/status/1889678429051629613</a> <a href="https://x.com/EyeonPalestine/status/1889396829164634317">https://x.com/EyeonPalestine/status/1889396829164634317</a>
50212-42293	2025-02-12	32.4642132	35.30737689	<a href="https://x.com/EyeonPalestine/status/1889661165782938021">https://x.com/EyeonPalestine/status/1889661165782938021</a>
50210-82364	2025-02-10	32.51358579	35.22227253	<a href="https://x.com/EyeonPalestine/status/1888824463698850017">https://x.com/EyeonPalestine/status/1888824463698850017</a>
50202-47188	2025-02-02	32.46073364	35.29475439	<a href="https://x.com/EyeonPalestine/status/1886098801015902431">https://x.com/EyeonPalestine/status/1886098801015902431</a>
50202-65890	2025-02-02	32.45621503	35.2958902	<a href="https://x.com/EyeonPalestine/status/1886055482533511611">https://x.com/EyeonPalestine/status/1886055482533511611</a>
50210-41091	2025-02-10	32.31502	35.063776	<a href="https://x.com/EyeonPalestine/status/1888918291558609345">https://x.com/EyeonPalestine/status/1888918291558609345</a>
50204-96385	2025-02-04	32.28202445	35.37490855	<a href="https://x.com/EyeonPalestine/status/1886773526155141218">https://x.com/EyeonPalestine/status/1886773526155141218</a>
50208-53418	2025-02-08	32.314836	35.037465	<a href="https://x.com/EyeonPalestine/status/1888315829038805113">https://x.com/EyeonPalestine/status/1888315829038805113</a>
50209-37645	2025-02-09	32.29178541	35.34543967	<a href="https://x.com/EyeonPalestine/status/1888518238356504920">https://x.com/EyeonPalestine/status/1888518238356504920</a>
50209-64920	2025-02-09	32.29178541	35.34543967	<a href="https://x.com/anas_shtaya/status/1888566583456313684">https://x.com/anas_shtaya/status/1888566583456313684</a>
50208-09206	2025-02-08	32.291627	35.346066	<a href="https://x.com/EyeonPalestine/status/1888370304784744621">https://x.com/EyeonPalestine/status/1888370304784744621</a>
50208-87438	2025-02-08	32.291963	35.347075	<a href="https://x.com/EyeonPalestine/status/1888188234095632766">https://x.com/EyeonPalestine/status/1888188234095632766</a>
50122-78543	2025-01-22	32.4629916	35.2886211	<a href="https://www.reuters.com/world/middle-east/israeli-minister-says-army-applying-lessons-gaza-west-bank-operation-2025-01-22/">https://www.reuters.com/world/middle-east/israeli-minister-says-army-applying-lessons-gaza-west-bank-operation-2025-01-22/</a>
50212-34046	2025-02-12	32.32304503	35.05447292	<a href="https://x.com/EyeonPalestine/status/1889609525042233734">https://x.com/EyeonPalestine/status/1889609525042233734</a>
50210-43232	2025-02-10	32.31708414	35.05537953	<a href="https://x.com/EyeonPalestine/status/1888897668866314454">https://x.com/EyeonPalestine/status/1888897668866314454</a>
50209-90290	2025-02-09	32.31849613	35.05393241	<a href="https://x.com/EyeonPalestine/status/1888562330809561385">https://x.com/EyeonPalestine/status/1888562330809561385</a> <a href="https://x.com/EyeonPalestine/status/1888566465600663732">https://x.com/EyeonPalestine/status/1888566465600663732</a>
50213-14901	2025-02-13	32.3194617	35.0554657	<a href="https://x.com/AlarabyTV/status/1890105494624198849">https://x.com/AlarabyTV/status/1890105494624198849</a>
50211-29828	2025-02-11	32.46181623	35.2961752	<a href="https://x.com/EyeonPalestine/status/1889245589453357321">https://x.com/EyeonPalestine/status/1889245589453357321</a>
50128-57987	2025-01-28	32.46199428	35.29323639	<a href="https://t.me/QudsN/524068">https://t.me/QudsN/524068</a>
50125-51952	2025-01-25	32.46213312	35.29185686	<a href="https://t.me/QudsN/522532">https://t.me/QudsN/522532</a>
50121-22165	2025-01-21	32.46198195	35.29425554	<a href="https://t.me/QudsN/520924">https://t.me/QudsN/520924</a>
50212-06116	2025-02-12	31.621504	35.139343	<a href="https://x.com/qudsn/status/1890310090462245081">https://x.com/qudsn/status/1890310090462245081</a>
50212-96126	2025-02-12	31.621504	35.139343	<a href="https://x.com/EyeonPalestine/status/1889558609769402864">https://x.com/EyeonPalestine/status/1889558609769402864</a> <a href="https://x.com/EyeonPalestine/status/1889557920838189123">https://x.com/EyeonPalestine/status/1889557920838189123</a>



50209-84102	2025-02-09	32.460718	35.287804	<a href="https://x.com/Gloz111/status/1888528988890378666">https://x.com/Gloz111/status/1888528988890378666</a>
50225-82973	2025-02-25	32.457276	35.287392	<a href="https://www.gettyimages.nl/detail/nieuwsfoto%27s/israeli-military-armored-vehicles-and-soldiers-surround-nieuwsfotos/2201360420?adppopup=true">https://www.gettyimages.nl/detail/nieuwsfoto%27s/israeli-military-armored-vehicles-and-soldiers-surround-nieuwsfotos/2201360420?adppopup=true</a>
50225-50849	2025-02-25	32.457276	35.287392	<a href="https://www.gettyimages.nl/detail/nieuwsfoto%27s/israeli-military-armored-vehicles-and-soldiers-surround-nieuwsfotos/2201360586?adppopup=true">https://www.gettyimages.nl/detail/nieuwsfoto%27s/israeli-military-armored-vehicles-and-soldiers-surround-nieuwsfotos/2201360586?adppopup=true</a>
50224-30111	2025-02-24	32.457276	35.287392	<a href="https://www.gettyimages.nl/detail/nieuwsfoto%27s/israeli-soldiers-walk-behind-a-tank-in-the-jenin-camp-for-nieuwsfotos/2201160086?adppopup=true">https://www.gettyimages.nl/detail/nieuwsfoto%27s/israeli-soldiers-walk-behind-a-tank-in-the-jenin-camp-for-nieuwsfotos/2201160086?adppopup=true</a>
50210-27477	2025-02-10	32.460739	35.294356	<a href="https://t.me/a7rarjeninn/458739">https://t.me/a7rarjeninn/458739</a>
50224-10679	2025-02-24	32.462246	35.291317	<a href="https://www.gettyimages.nl/detail/nieuwsfoto%27s/displaced-palestinian-man-carries-personal-belongings-nieuwsfotos/2201160048?adppopup=true">https://www.gettyimages.nl/detail/nieuwsfoto%27s/displaced-palestinian-man-carries-personal-belongings-nieuwsfotos/2201160048?adppopup=true</a>
50219-78693	2025-02-19	32.46198	35.294221	<a href="https://www.gettyimages.nl/detail/nieuwsfoto%27s/palestinian-families-leave-their-destroyed-homes-after-nieuwsfotos/2199958222?adppopup=true">https://www.gettyimages.nl/detail/nieuwsfoto%27s/palestinian-families-leave-their-destroyed-homes-after-nieuwsfotos/2199958222?adppopup=true</a>
50124-68258	2025-01-24	32.455163	35.292794	<a href="https://t.me/a7rarjeninn/454717">https://t.me/a7rarjeninn/454717</a>
50103-97303	2025-01-03	32.319284	35.055519	<a href="https://x.com/AlarabyTV/status/1742569003116278092">https://x.com/AlarabyTV/status/1742569003116278092</a>
50317-96621	2025-03-17	32.458713	35.287042	<a href="https://t.me/jenin_today5/165948">https://t.me/jenin_today5/165948</a>
50202-53831	2025-02-02	32.464508	35.287644	<a href="https://x.com/HShaqrah/status/1886042378399551672">https://x.com/HShaqrah/status/1886042378399551672</a>
50202-03930	2025-02-02	32.457179	35.288868	<a href="https://t.me/jeninnews1/136697">https://t.me/jeninnews1/136697</a>
50202-63211	2025-02-02	32.457179	35.288868	<a href="https://t.me/jeninnews1/136695">https://t.me/jeninnews1/136695</a>
50202-88438	2025-02-02	32.45895	35.286672	<a href="https://x.com/manniefabian/status/1886102141133091207">https://x.com/manniefabian/status/1886102141133091207</a>
50202-22013	2025-02-02	32.459169	35.29007	<a href="https://t.me/JeninMix/214556">https://t.me/JeninMix/214556</a>
50303-75341	2025-03-03	32.461399	35.290669	<a href="https://x.com/TamerTamer73397/status/1896657503863386449">https://x.com/TamerTamer73397/status/1896657503863386449</a>
50122-12414	2025-01-22	32.463751	35.28477	<a href="https://x.com/QudsNen/status/1882008731355099222">https://x.com/QudsNen/status/1882008731355099222</a>
50213-58178	2025-02-13	32.461437	35.309712	<a href="https://x.com/PalpostN/status/1890023577325543517">https://x.com/PalpostN/status/1890023577325543517</a>
50212-02213	2025-02-12	32.457861	35.285616	<a href="https://t.me/jenin_gher/68129">https://t.me/jenin_gher/68129</a>
50127-48341	2025-01-27	32.319303	35.062261	<a href="https://x.com/IAFsite/status/1883897578212737520">https://x.com/IAFsite/status/1883897578212737520</a>
50126-83292	2025-01-26	32.457861	35.285616	<a href="https://t.me/jenin_gher/68452">https://t.me/jenin_gher/68452</a>
50401-50721	2025-04-01	32.460971	35.28811	<a href="https://t.me/jenin_today5/167094">https://t.me/jenin_today5/167094</a>
50123-52796	2025-01-23	32.457309	35.288443	<a href="https://x.com/AbujomaaGaza/status/1882418864606371896">https://x.com/AbujomaaGaza/status/1882418864606371896</a>
50209-02451	2025-02-09	32.318861	35.054034	<a href="https://www.facebook.com/FajerTV/videos/931863882365574">https://www.facebook.com/FajerTV/videos/931863882365574</a> <a href="https://x.com/EyeonPalestine/status/1888562330809561385">https://x.com/EyeonPalestine/status/1888562330809561385</a> <a href="https://www.instagram.com/p/DF3GfmPo_XZ/?hl=en&amp;img_index=2">https://www.instagram.com/p/DF3GfmPo_XZ/?hl=en&amp;img_index=2</a>

50306-81971	2025-03-06	32.318875	35.058785	<a href="https://t.me/noursams/74951">https://t.me/noursams/74951</a>
50305-64172	2025-03-05	32.318386	35.059959	<a href="https://t.me/noursams/74908">https://t.me/noursams/74908</a>
50305-96635	2025-03-05	32.318371	35.059997	<a href="https://t.me/noursams/74876">https://t.me/noursams/74876</a>
50305-69121	2025-03-05	32.318561	35.058833	<a href="https://www.gettyimages.nl/detail/nieuwsfoto%27s/palestinians-with-their-belongings-leave-the-area-after-nieuwsfotos/2202881239?adppopup=true">https://www.gettyimages.nl/detail/nieuwsfoto%27s/palestinians-with-their-belongings-leave-the-area-after-nieuwsfotos/2202881239?adppopup=true</a>
50305-17551	2025-03-05	32.319386	35.058989	<a href="https://t.me/noursams/74839">https://t.me/noursams/74839</a>
50305-08773	2025-03-05	32.319872	35.058809	<a href="https://t.me/noursams/74835">https://t.me/noursams/74835</a>
50305-11290	2025-03-05	32.320479	35.058848	<a href="https://t.me/noursams/74834">https://t.me/noursams/74834</a>
50202-30005	2025-02-02	32.460589	35.287983	<a href="https://x.com/manniefabian/status/1886102141133091207">https://x.com/manniefabian/status/1886102141133091207</a>
50211-68357	2025-02-11	32.31947	35.056824	<a href="https://x.com/EyeonPalestine/status/1889335537896501488">https://x.com/EyeonPalestine/status/1889335537896501488</a>
50217-60766	2025-02-17	32.318555	35.058629	<a href="https://x.com/qudsn/status/1891549425224253761">https://x.com/qudsn/status/1891549425224253761</a>
50219-40917	2025-02-19	32.461291	35.292666	<a href="https://x.com/V_Palestine20/status/1892274373228171735">https://x.com/V_Palestine20/status/1892274373228171735</a>
50128-34286	2025-01-28	32.31015	35.024089	<a href="https://t.me/tulkarembaladna10/176458">https://t.me/tulkarembaladna10/176458</a>
50128-52496	2025-01-28	32.310877	35.024681	<a href="https://t.me/tulkarembaladna10/176457">https://t.me/tulkarembaladna10/176457</a>
50128-69695	2025-01-28	32.31394	35.030097	<a href="https://t.me/tulkarembaladna10/176460">https://t.me/tulkarembaladna10/176460</a>
50128-02048	2025-01-28	32.314752	35.032667	<a href="https://t.me/tulkarembaladna10/176468">https://t.me/tulkarembaladna10/176468</a>
50128-78625	2025-01-28	32.311664	35.032704	<a href="https://t.me/tulkarembaladna10/176469">https://t.me/tulkarembaladna10/176469</a>
50128-68397	2025-01-28	32.314226	35.030126	<a href="https://t.me/tulkarembaladna10/176497">https://t.me/tulkarembaladna10/176497</a>
50129-15055	2025-01-29	32.280145	35.383184	<a href="https://x.com/EyeonPalestine/status/1884707954814841201">https://x.com/EyeonPalestine/status/1884707954814841201</a> <a href="https://x.com/HalaAkhbar/status/1884710051786453045">https://x.com/HalaAkhbar/status/1884710051786453045</a> <a href="https://x.com/qudsn/status/1884699540076310897">https://x.com/qudsn/status/1884699540076310897</a> <a href="https://t.me/palmoh/1467">https://t.me/palmoh/1467</a> <a href="https://x.com/idfonline/status/1884686714196684901">https://x.com/idfonline/status/1884686714196684901</a>
50129-63940	2025-01-29	32.314492	35.033577	<a href="https://t.me/tulkarembaladna10/176777">https://t.me/tulkarembaladna10/176777</a> <a href="https://t.me/tulkarembaladna10/176780">https://t.me/tulkarembaladna10/176780</a>
50130-70625	2025-01-30	32.311891	35.029501	<a href="https://t.me/tulkarembaladna10/176916">https://t.me/tulkarembaladna10/176916</a>
50130-05081	2025-01-30	32.31448	35.033112	<a href="https://t.me/tulkarembaladna10/176922">https://t.me/tulkarembaladna10/176922</a>
50131-09163	2025-01-31	32.318124	35.038283	<a href="https://t.me/tulkarembaladna10/177082">https://t.me/tulkarembaladna10/177082</a>
50131-00110	2025-01-31	32.311442	35.031894	<a href="https://t.me/tulkarembaladna10/177100">https://t.me/tulkarembaladna10/177100</a>
50202-91393	2025-02-02	32.311892	35.029768	<a href="https://t.me/tulkarembaladna10/177338">https://t.me/tulkarembaladna10/177338</a>
50124-72145	2025-01-24	32.462444	35.290509	<a href="https://x.com/AbujomaaGaza/status/1882670793534087188">https://x.com/AbujomaaGaza/status/1882670793534087188</a>
50406-65438	2025-04-06	32.462667	35.289706	<a href="https://x.com/EyeonPalestine/status/1908882745570320588">https://x.com/EyeonPalestine/status/1908882745570320588</a>
50210-33932	2025-02-10	32.290107	35.343435	<a href="https://x.com/qudsn/status/1888933905643741575">https://x.com/qudsn/status/1888933905643741575</a>
50219-00130	2025-02-19	32.461271	35.292693	<a href="https://x.com/Gloz111/status/1892261321951121859">https://x.com/Gloz111/status/1892261321951121859</a>
50420-83778	2025-04-20	32.31937	35.0579	<a href="https://t.me/noursams/78759">https://t.me/noursams/78759</a>



50202-91200	2025-02-02	32.458449	35.285228	<a href="https://x.com/Gloz111/status/1886089395561714026">https://x.com/Gloz111/status/1886089395561714026</a>
50423-85842	2025-04-23	32.463412	35.288777	<a href="https://t.me/jenin_today5/168787">https://t.me/jenin_today5/168787</a> <a href="https://x.com/MenaLive_/status/1914986559058624521">https://x.com/MenaLive_/status/1914986559058624521</a> <a href="https://x.com/TheCradleMedia/status/1914980608633085965">https://x.com/TheCradleMedia/status/1914980608633085965</a>
50423-18214	2025-04-23	32.463776	35.284543	<a href="https://t.me/jenin_gher/75189">https://t.me/jenin_gher/75189</a> <a href="https://t.me/tubasGate/39394">https://t.me/tubasGate/39394</a> <a href="https://x.com/EyeonPalestine/status/1914973392240775249">https://x.com/EyeonPalestine/status/1914973392240775249</a>
50423-41437	2025-04-23	32.463466	35.288722	<a href="https://t.me/jenin_gher/75188">https://t.me/jenin_gher/75188</a>
50423-10097	2025-04-23	32.471527	35.302805	<a href="https://t.me/jenin_today5/168785">https://t.me/jenin_today5/168785</a>
50423-87930	2025-04-23	32.468799	35.303647	<a href="https://t.me/jenin_today5/168785">https://t.me/jenin_today5/168785</a>
50423-29400	2025-04-23	32.46829	35.288866	<a href="https://x.com/WAFANewsEnglish/status/1914965902795198718">https://x.com/WAFANewsEnglish/status/1914965902795198718</a>
50423-85421	2025-04-23	32.459723	35.293797	<a href="https://t.me/jenin_today5/168797">https://t.me/jenin_today5/168797</a> <a href="https://t.me/Jenin2camp/442544">https://t.me/Jenin2camp/442544</a> <a href="https://x.com/PalpostN/status/1915016749650530589">https://x.com/PalpostN/status/1915016749650530589</a> <a href="https://x.com/Aljarmagnetnews/status/1915039309964489147">https://x.com/Aljarmagnetnews/status/1915039309964489147</a> <a href="https://www.instagram.com/raya.orouq/reel/Dlyki8kNI34/">https://www.instagram.com/raya.orouq/reel/Dlyki8kNI34/</a>
50422-62835	2025-04-22	32.462467	35.288782	<a href="https://t.me/tulkarembaladna10/182906">https://t.me/tulkarembaladna10/182906</a>